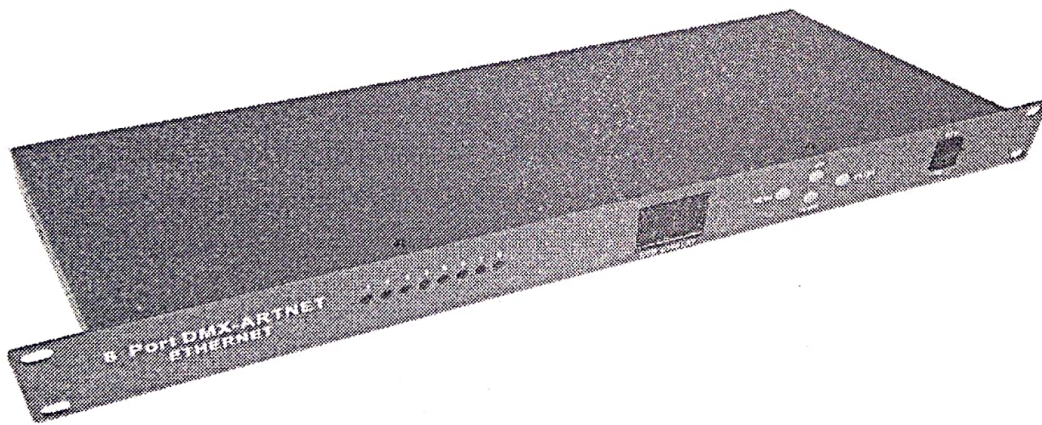
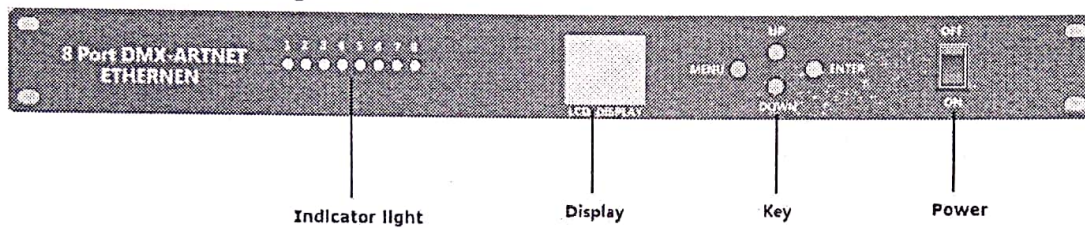


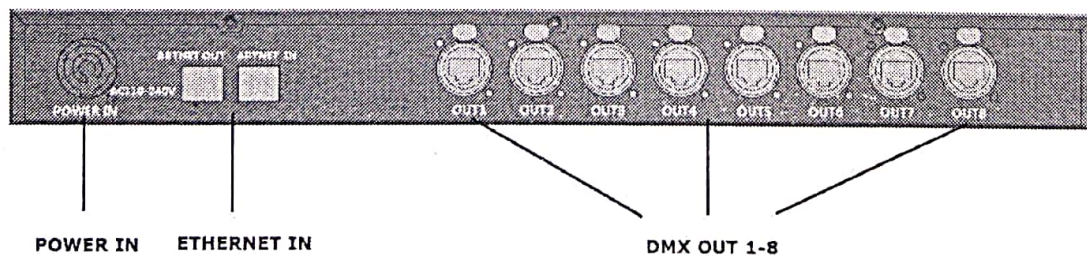
SH-8 Menu instructions



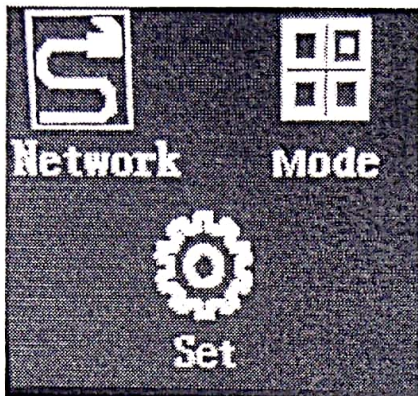
1.8 Por Front panel



2.8 Por Rear panel



After the boot into the display work mode interface



The standby display panel displays the operation mode and IP address (the factory default IP of different customized models may be different)

Network settings:

Press the menu key and then press the OK key to enter the network setting

IP address settings:

Press "OK" to enter, press "up and down" to select and modify, and press "OK" again to save

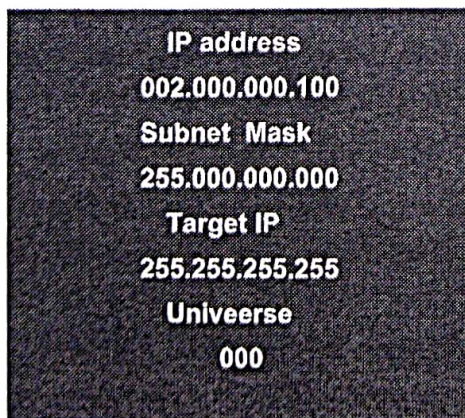
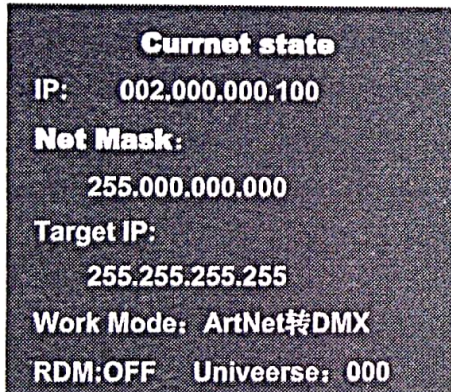
Set mask address:

(please note that different network segments use different mask provisions, The factory default class C IP is 192 x. Corresponding to x. x The mask is 255.255.255.0; The class a network segment IP is The mask of 2. X.x.x is 255.0.0.0) Please search online for information

The target IP does not need to be modified

Universe mask:

Press "OK" to enter, press "up and down" to select and modify, and press "OK" again to save (000: corresponding 1-8 fields 008: corresponding 9-16 fields 016: relative 17-24 fields) and so on



Function setting:

RDM selection:		
ON		OFF
Back light:		
ON		OFF
Chinese/English:		
English		中文
FactorY Reset:		
Yes		ON

Press "OK" to enter, press "up and down" to select and modify, and press "OK" again to save

When the RDM function is enabled, it supports the tiger console to modify the address code remotely

Backlight setting: "on" screen is on for a long time "off"

The backlight turns off automatically after 15 seconds

Chinese English conversion: "English" conversion English interface "Chinese" conversion Chinese interface
Restore factory settings: "yes" restore factory settings, restart "no" has no effect

Mode selection

ArtNet->DMX
DMX->ArtNet

Mode:

Press the "OK" key to enter, press the "up and down" key to select and modify, and press "OK" again to save and restart the equipment